

E-LINE IV

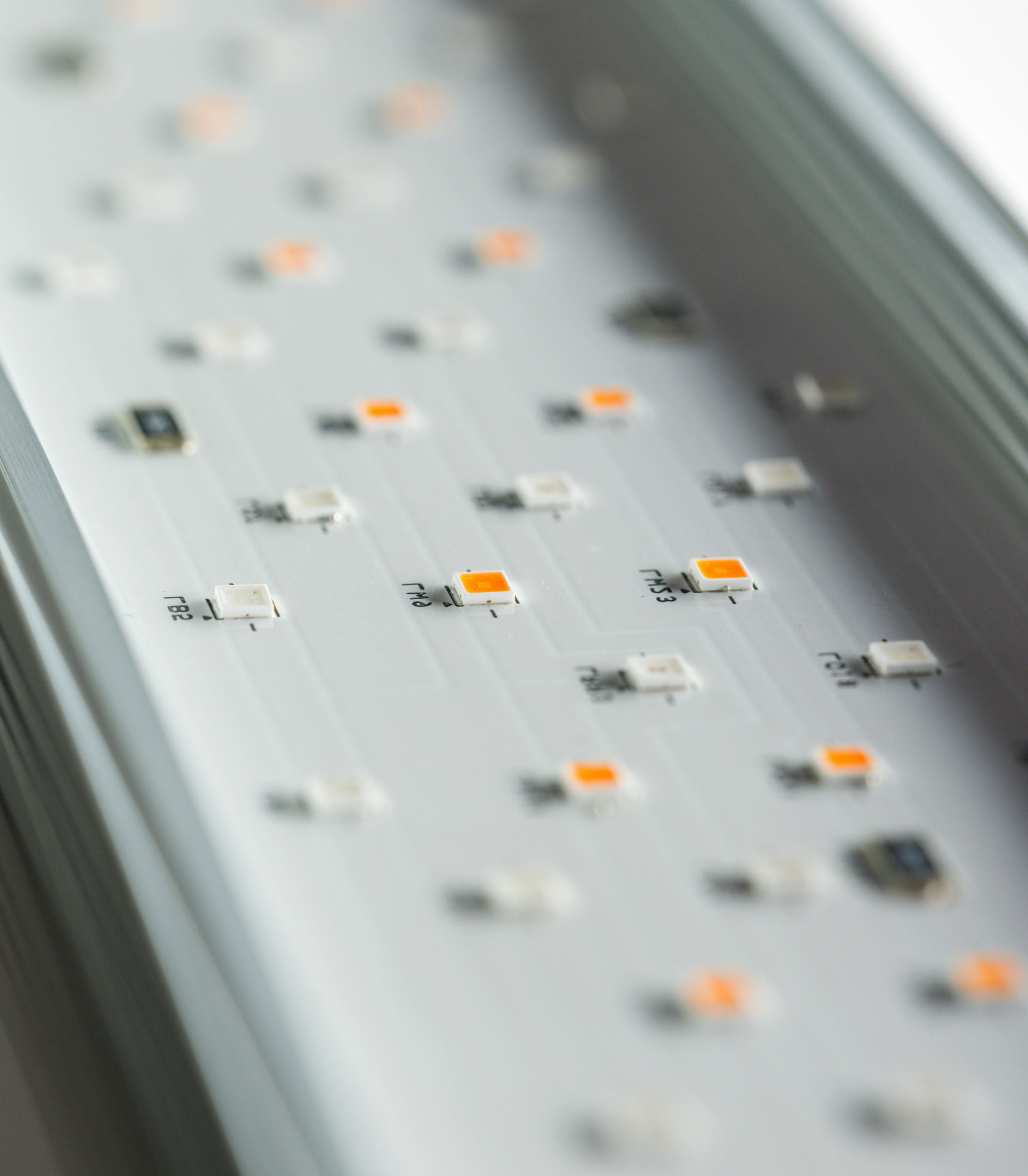
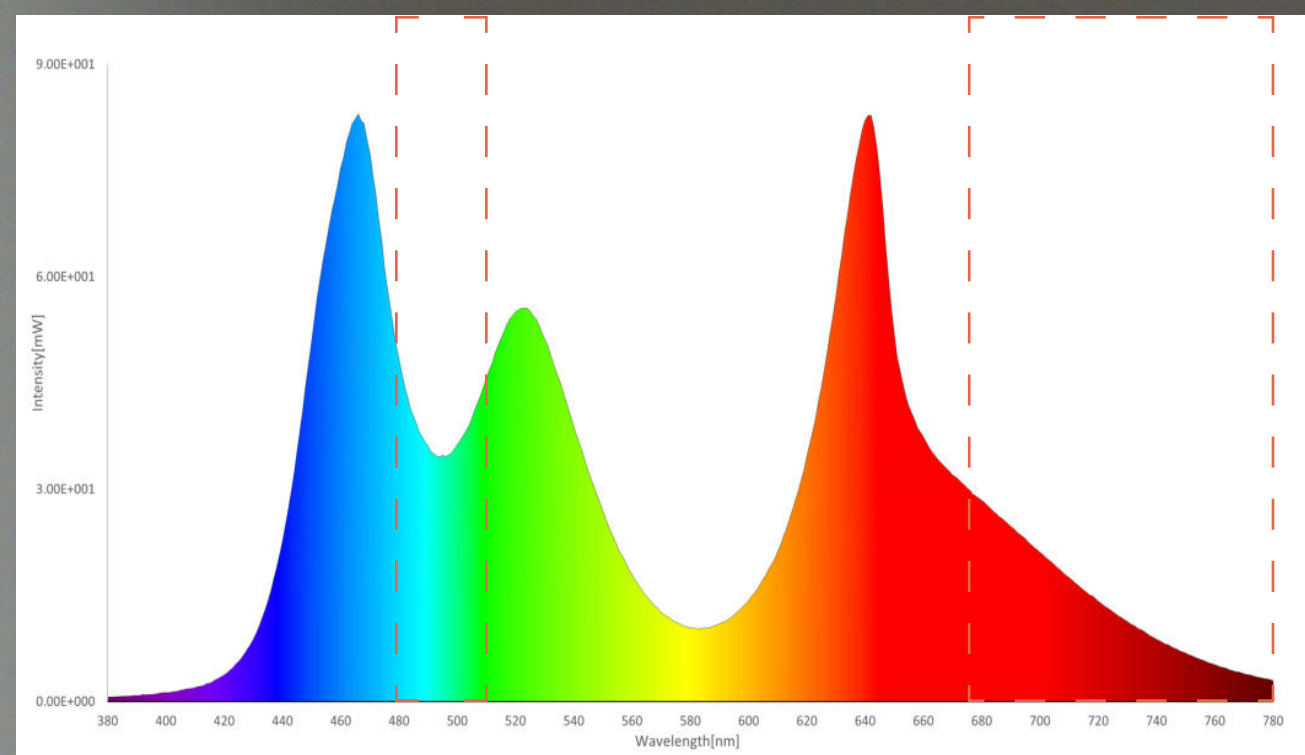
THE ORANGE COLOR LED CUSTOMIZED BY TWINSTAR

This is new customized LED by TWINSTAR to make ideal spectrum for plants growth and enhance visibility for your eye.

It incorporates not only two colors, blue(464nm~480nm) and red(617nm~630nm) but all the light required for plant growth into a single package by elaborating a combination of phosphors.

How to check? That's simple.
Once installed, the plants will respond instantly and you can observe photosynthesis for plant growth.

Particular wavelengths area



ENHANCED VISIBILITY

Light with all colors also helps to enhance visibility for your eye. You'll see vivid and colorful plants as you've never seen before.

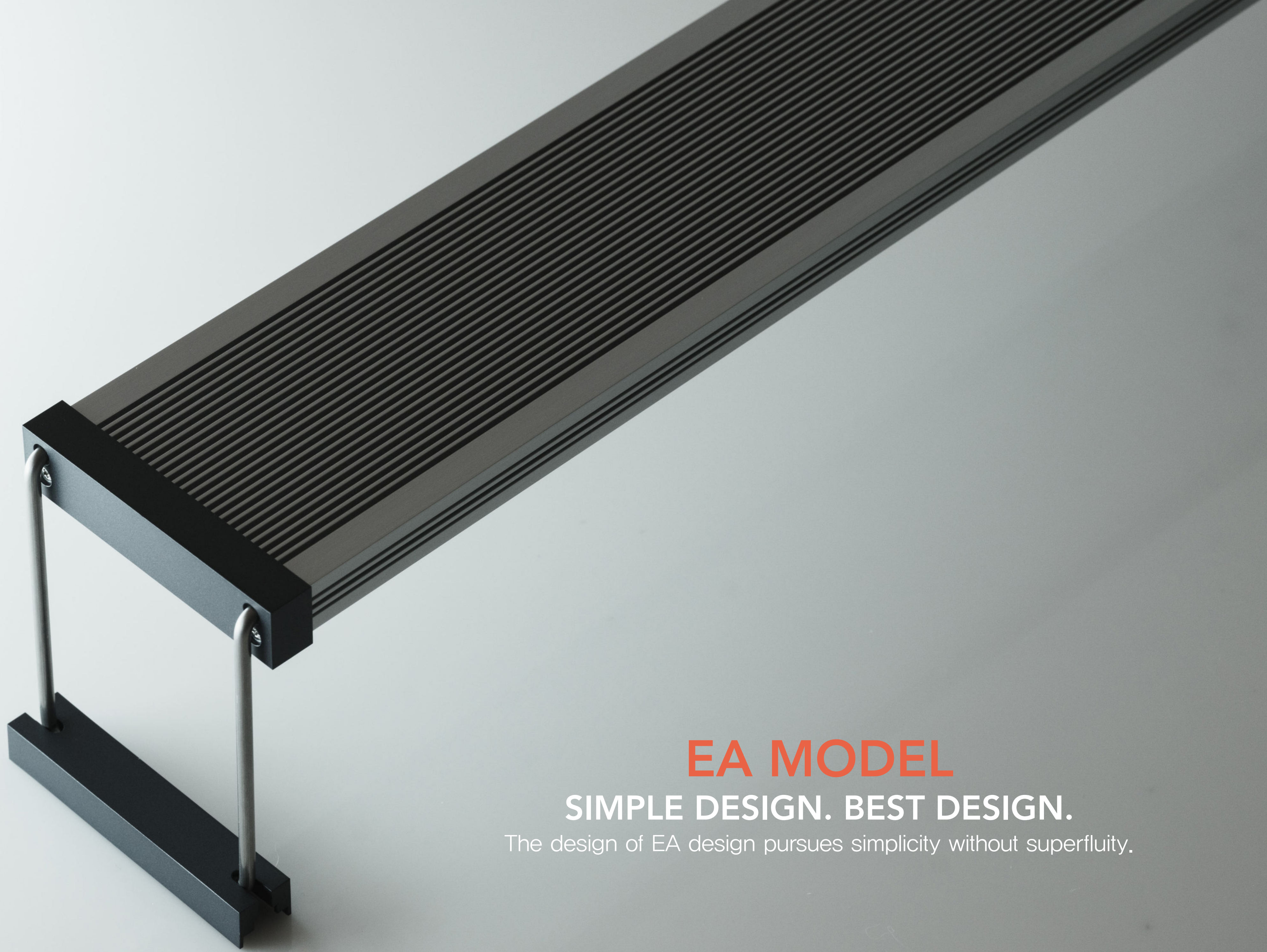


TWINSTAR DIMMER

The dimmer has 7 levels of brightness control and a built-in timer that can be set at intervals of 6 hours, 8 hours, 10 hours. There is an On/Off button to turn the light on and off at any time.

The " Slow start and down " function, which turns on and off slowly for 10 minutes, provides a stable habitat for the aquarium fishes.





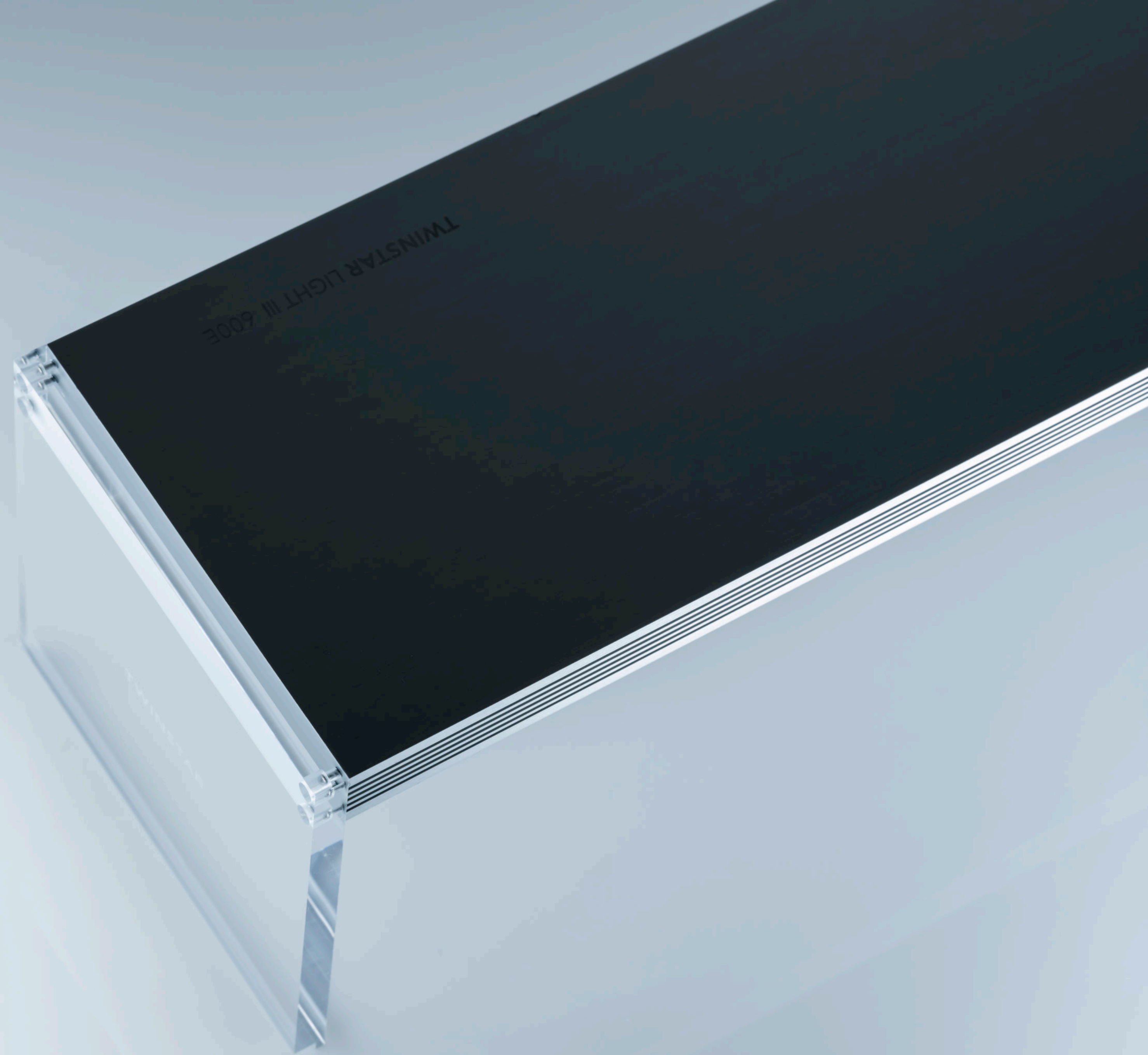
EA MODEL

SIMPLE DESIGN. BEST DESIGN.

The design of EA design pursues simplicity without superfluity.

EC MODEL CLASSIC MODEL

EC Model is our E line of classic design and our first design for TWINSTAR LIGHT.





ORIGINAL DESIGN WITH NEW SPECTRUM

The snow-white frame and clear acrylics are applied to the classic model. It also apply "ORANGE LED" For EC version IV. Brightness is higher than EA model.

EA LINE SPECIFICATION

| MODEL | TANK SIZE (mm) | GLASS THICKNESS (mm) | NUMBER OF LED | | POWER CONSUMPTION (W) | BRIGHTNESS (lm) |
|--------|-------------------|----------------------------|---------------|-----|-----------------------------|--------------------|
| | | | ORANGE LED | RGB | | |
| 200EA | 200x200x200 | 6mm | 12 | 17 | 17 | 850 |
| 300EA | 300x180x240 | 6mm | 14 | 33 | 21 | 1050 |
| 450EA | 450x270x300 | 6mm | 28 | 52 | 30 | 1500 |
| 600EA | 600x300x360 | 8mm | 35 | 52 | 40 | 2100 |
| 900EA | 900x450x450 | 12mm | 56 | 90 | 52 | 2600 |
| 1200EA | 1200x450x450 | 12mm | 56 | 100 | 61 | 3050 |
| 450EC | 450x270x300 | 5mm | 28 | 52 | 37 | 1850 |
| 600EC | 600x300x360 | 6mm | 35 | 67 | 48 | 2400 |

TWINSTAR

94, Chaseong-ro, Gijang-eup, Gijang-gun, Busan, Korea
T + 82 10 9909 8700 **E** sales@twinstar.kr **W** www.twinstar.kr